



# UW Waukesha Library

# Restroom Reader

A publication of the UW Waukesha Library

Volume 4, Issue 4

October 16-31, 2009

## A final note about your final payment from the Business Office finally.

If you are enrolled in the Partial Payment plan, avoid any additional charges by paying the final installment of your tuition by 4:00pm on Wednesday Oct. 28. No bills will be mailed to students. Pay your tuition now so you can finally forget about it.

Did you know that the LIBRARY is the only place on campus with a color copier/scanner? Only .05 for black/white and .15 for color copies.

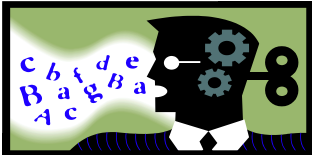
**Helpful hints about your library.**

- Get to know us. We are your own personal research assistants! We are a wealth of information for your class research needs. We also know a lot about UW Waukesha in general and if we can't answer your question we will find someone who can. All you have to do is ask for help at the circulation desk.
- You can access all of the library's resources from any computer ANYWHERE! You will be prompted to log in if you are not on campus. Your log in is the same username that you use to log in on campus.
- The library is now open until 10pm Monday-Thursday.
- You can ask for a quiet study room, or a room where your group can study. Inquire at the circulation desk.

Email us if we aren't here when you are. Here is our email address: [wakref@uwc.edu](mailto:wakref@uwc.edu)

## EVERYONE'S INVITED!

- Oct. 20 Prof. Greg Ahrenhoerster talks on "Baseball as a symbol of innovation and corruption" noon, C101
- Oct 21-22 Guitar Hero Contest—Students battle to become a Guitar Hero Champion. 11:30-1:00pm, HUB
- Oct. 27 Campus Read Day of Discussion for "Into the Wild" Noon, private dining room
- Oct. 29 Halloween Party—Dress up, get in on the activities and win a prize, noon-1:00pm, HUB
- Oct. 30 Fiesta para la Comunidad, celebrate Hispanic Heritage Month with music, food and live entertainment, 6-11pm, HUB



## Noisy Distractions

Have you ever tried to concentrate in class but some distraction outside (and sometimes inside) the classroom made it hard for you to pay attention? Please consider that while the door to a classroom may be closed, there may still be a class going on inside. People chatting outside the classroom and down the hall can make it difficult for the students and instructors in the classroom to focus on the class lecture. It is **good** to be social with your classmates and professors, but please try to be respectful and speak in soft tones when hanging out in the hallways waiting for your class to begin.

**"Success is not final, failure is not fatal: it is the courage to continue that counts."  
Winston Churchill**