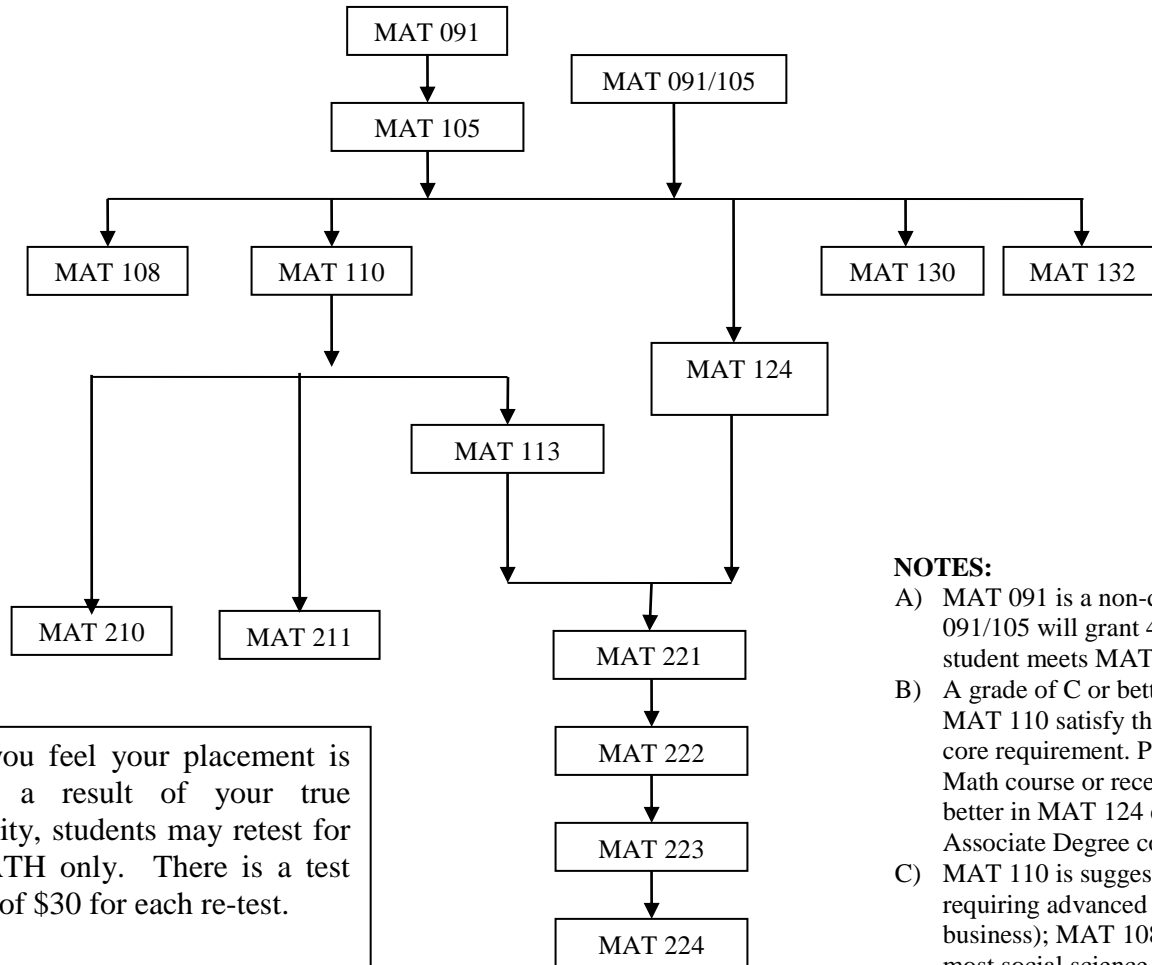


Math Placement Test Interpretation



If you feel your placement is not a result of your true ability, students may retest for MATH only. There is a test fee of \$30 for each re-test.

Please contact Carrie Roulet in Enrollment Services for information on re-testing.

NOTES:

- A) MAT 091 is a non-degree course. MAT 091/105 will grant 4 degree credits if the student meets MAT 105 proficiency.
- B) A grade of C or better in MAT 108 or MAT 110 satisfy the Associate Degree core requirement. Placing into a 200-level Math course or receiving a grade of C or better in MAT 124 exempts you from the Associate Degree core requirement.
- C) MAT 110 is suggested for majors requiring advanced math (science & business); MAT 108 is suggested for most social science, humanities and education majors.
- D) Many of the 200-level Mathematics courses are needed by specific majors like Mathematics, Engineering, Business, and Pharmacy. Please talk to your advisor about appropriate classes for your major.

University of Wisconsin-Waukesha English Department Placement Procedures

The English Department at the University of Wisconsin-Waukesha considers English placement one of the most important indicators of success at the college level. Each student is placed based on careful consideration of multiple documents:

1. **Questionnaire:** This document indicates your past experience with English and Composition courses.
2. **WEPT Exam:** This exam indicates your readiness with the more formal components of English and Composition.
3. **ACT Exam:** This exam indicates your readiness with college level reading as well as the more formal components of English and Composition.
4. **Essay Exam:** This essay indicates your experience and ability with reading and writing argumentative analysis. It is assessed via the rubric on the next page.

Once the department has received each of these documents, a team of instructors carefully reads and discusses each document. The team then decides which course in the First Year Writing sequence would be the most beneficial starting point for you in your college career.

Please remember our desire is to see you succeed not only in the First Year Writing sequence, but in your other courses as well. We believe that this placement process is the first step toward that success, and the process is a very careful one. Nevertheless, if you feel you have not been placed appropriately, you may contact one of the Associate Chairs and ask that your file be re-examined.

Sincerely,

Cassandra Phillips, Associate Professor of English
(262) 521-5522 or cassandra.phillips@uwec.edu

Greg Ahrenhoerster, Associate Professor of English
(262) 521-5522 or greg.ahrenhoerster@uwec.edu

	English 098	English 101	English 102
Organization	<p>Essay lacks coherence or a single controlling idea or ideas are not logically arranged</p> <p>May or may not use standard essay structure</p>	<p>Essay is coherent and focuses on a main point.</p> <p>Ideas are arranged logically</p> <p>Uses standard essay structure of introduction, body, conclusion</p>	<p>Writes and supports a clear, focused, and appropriately placed thesis</p> <p>Supports a coherent and cohesive essay using transitions within and between paragraphs</p>
Content	<p>Essay does not clearly address the text</p> <p>Agreement/disagreement with author not clear (does not explicitly answer the question)</p> <p>Does not use examples to support claims</p>	<p>Essay refers to text</p> <p>Clearly agrees/disagrees with author</p> <p>Uses a few examples to support claims</p>	<p>Essay explicitly addresses and engages with the text</p> <p>Explains and evaluates argument clearly</p> <p>Uses adequate examples to support claims</p>
Conventions of standard written English	<p>Essay does not demonstrate understanding of how sentences work and are constructed</p> <p>Mechanical problems interfere with the reader's comprehension of essay meaning</p>	<p>Essay contains structurally sound sentences using appropriate syntax and adhering to grammar and usage conventions</p>	<p>Essay demonstrates mastery of usage, mechanics, and diction appropriate for an academic essay</p>

Support Course: ENG 099	Support Course: LEA 101
Needs additional support in using organization strategies	Reader needs support identifying organization strategies in texts to increase reading comprehension
Needs additional support to engage with text and use examples as evidence	<p>Reader needs to develop active reading strategies and ability to distinguish between main ideas and support details in text.</p> <p>Reader needs to gain understanding of how examples work to illustrate ideas.</p>
Needs individual coaching on standard academic syntax and grammar and assistance with editing and polishing written work	Reader needs guided exposure to texts using standard academic syntax, grammar, and mechanics